

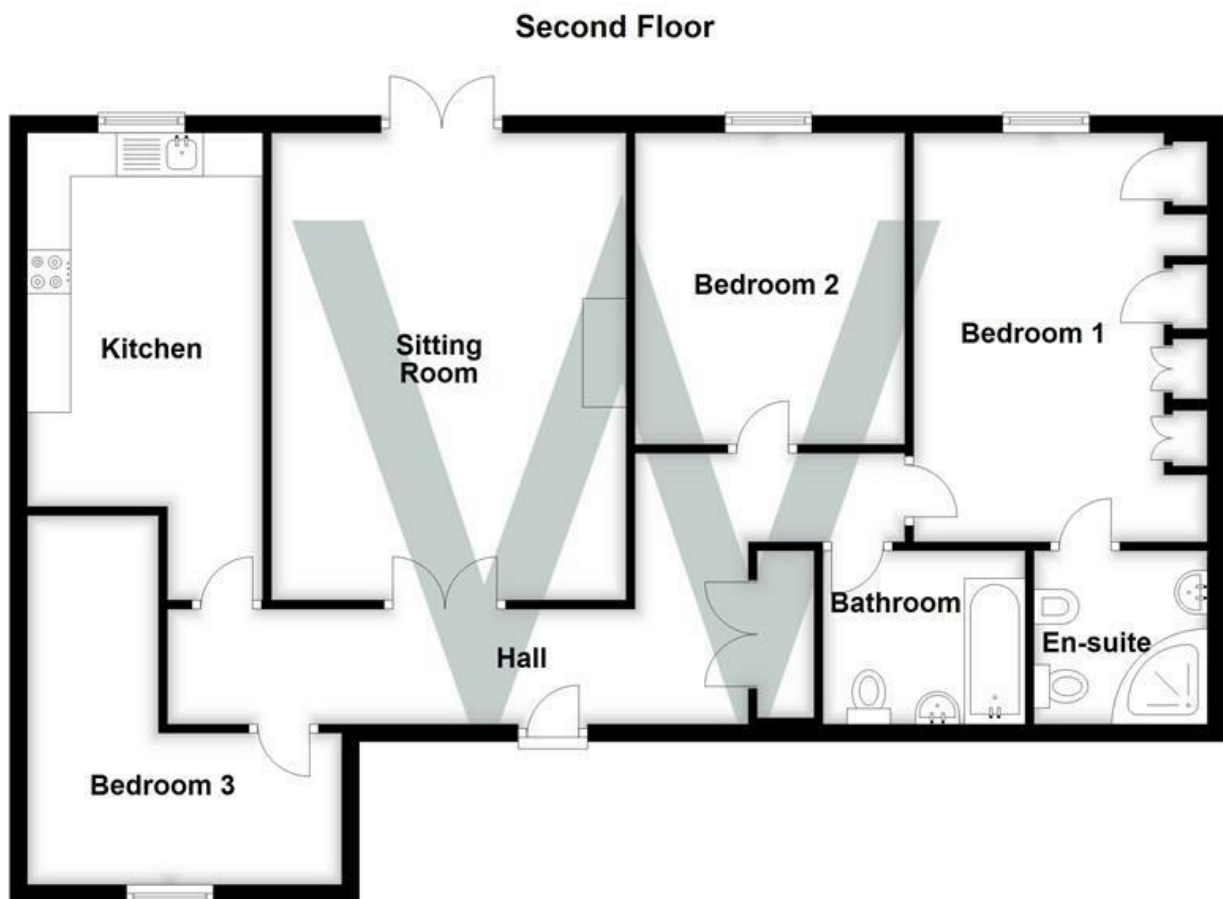


8, Atherton Court St. Marks Avenue, Salisbury, Wiltshire, SP1 3UF

A superb spacious second floor three bedroom apartment with allocated parking space and single garage.

- SPACIOUS SECOND FLOOR APARTMENT
- THREE BEDROOMS (MASTER BEDROOM WITH EN-SUITE)
- LOCATED WITHIN WALKING DISTANCE OF SALISBURY CITY CENTRE
- ALLOCATED PARKING SPACE AND SINGLE GARAGE
- LIFT AND STAIR ACCESS
- EPC BAND C
- COUNCIL TAX BAND F
- *** SORRY NO CHILDREN, NO PETS, NO SHARERS***

£1,250 PCM



WHITES

Castle Chambers, 47 Castle Street, Salisbury,
Wiltshire, SP1 3SP

Tel: 01722 336422/Option 2

www.hwwhite.co.uk

email: lettings-management@hwwhites.co.uk

Energy Efficiency Rating		
	Current	Potential
Very energy efficient - lower running costs		
(92 plus) A		
(81-91) B		
(69-80) C		
(55-68) D		
(39-54) E		
(21-38) F		
(1-20) G		
Not energy efficient - higher running costs		
England & Wales	EU Directive 2002/91/EC	

Environmental Impact (CO ₂) Rating		
	Current	Potential
Very environmentally friendly - lower CO ₂ emissions		
(92 plus) A		
(81-91) B		
(69-80) C		
(55-68) D		
(39-54) E		
(21-38) F		
(1-20) G		
Not environmentally friendly - higher CO ₂ emissions		
England & Wales	EU Directive 2002/91/EC	